



Installation Instructions and Configuration Guide for ProNFS v2.1 Client using SSH on Windows XP



www.Labtam-inc.com

help@Labtam-inc.com

**Labtam Inc.
9899 Santa Monica Blvd
Suite 356, Beverly Hills
CA, 90212, USA**

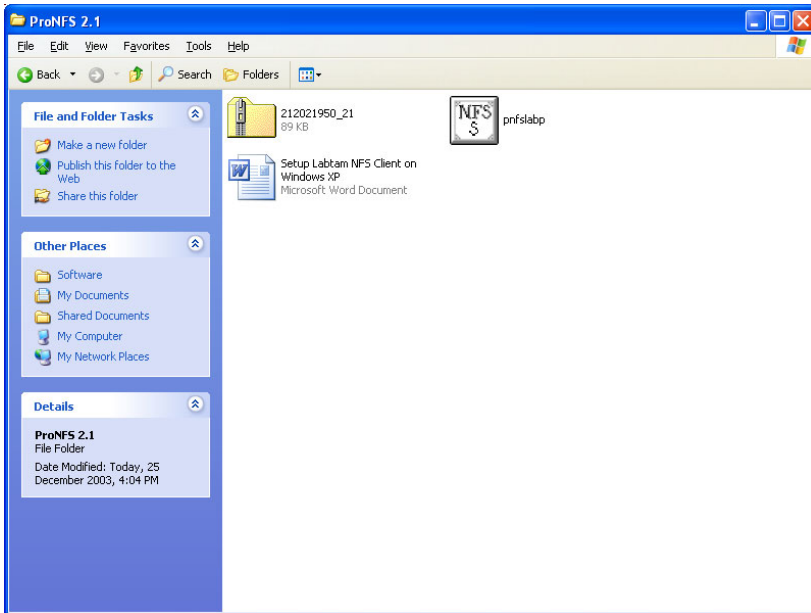


Table of Contents

1.0 Install ProNFS Software on Windows XP	3
2.0 Settings for NFS Client – using SSH.....	7
3.0 NFS Server Settings – (Redhat v9).....	8
4.0 Mount NFS Client on Windows XP	10
5.0 Map Remote NFS Folder to Windows Drive	18

1.0 Install ProNFS Software on Windows XP

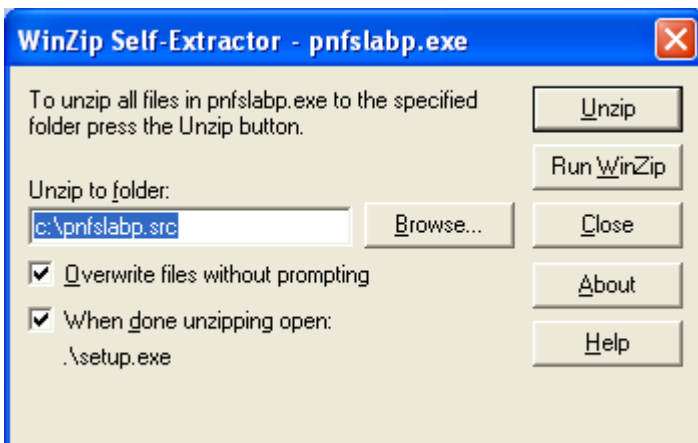
Download and execute file **pnfslabp.exe** from www.Labtam-inc.com



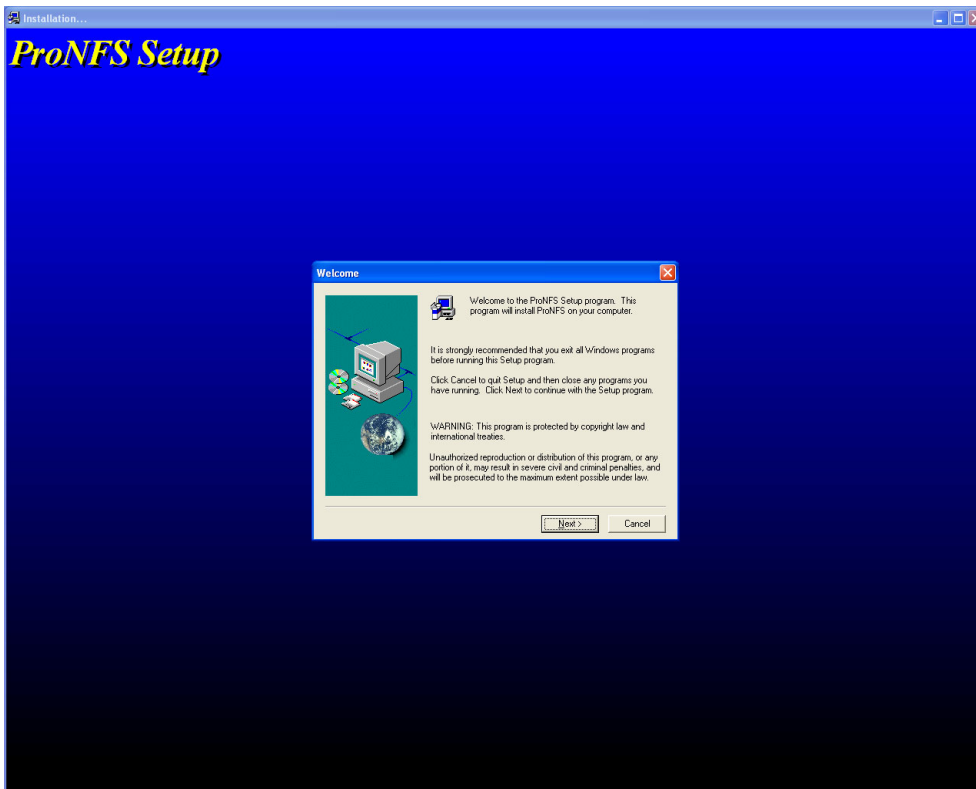
Double click **pnfslabp**



Click **OK**

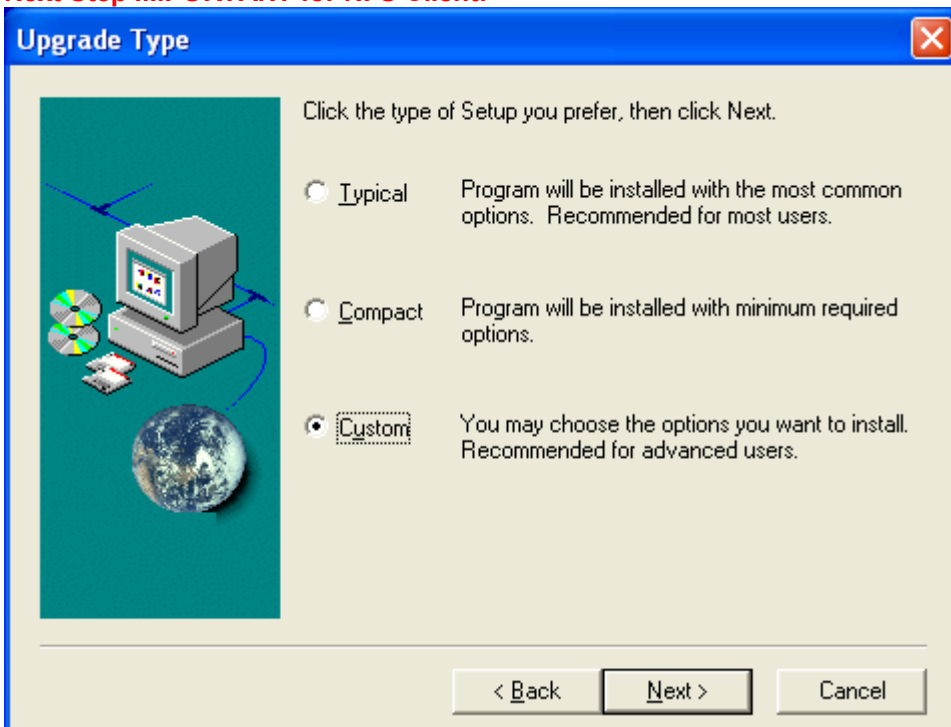


Click **Unzip** – (c:\pnfslabp.scr is the folder that the installation files will be extracted to)



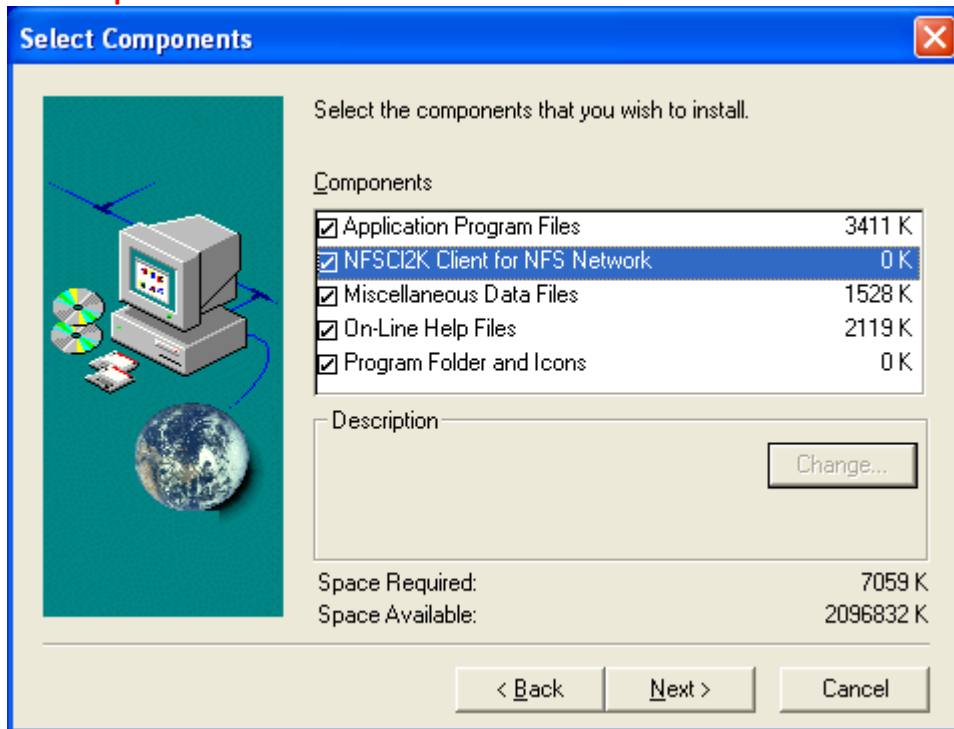
Click **Next**

Next Step IMPORTANT for NFS Client!

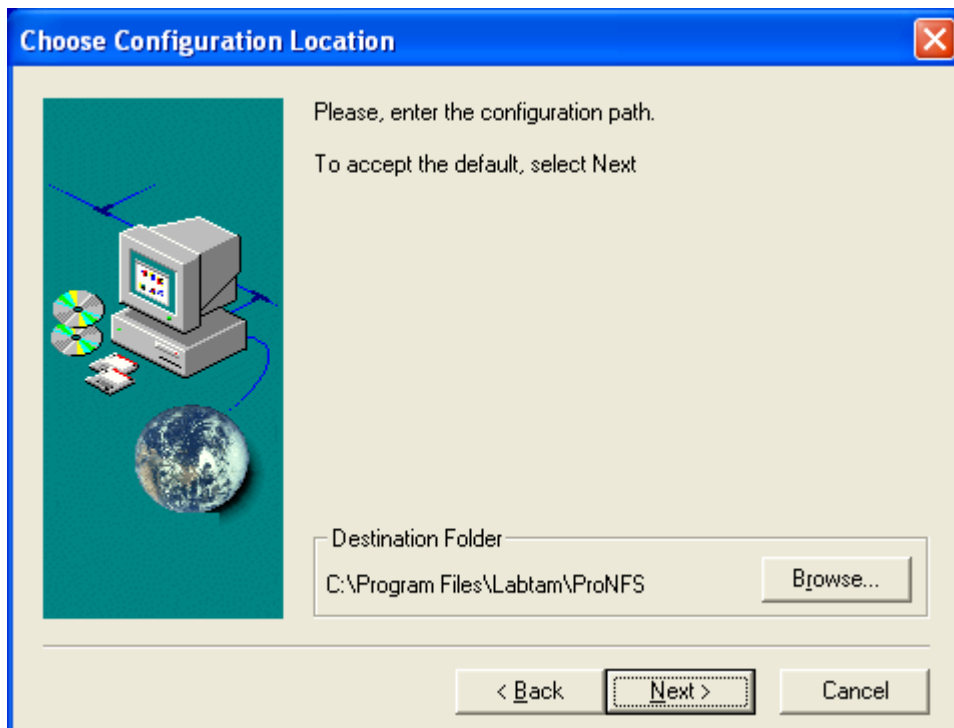


Select **Custom** and click **Next**

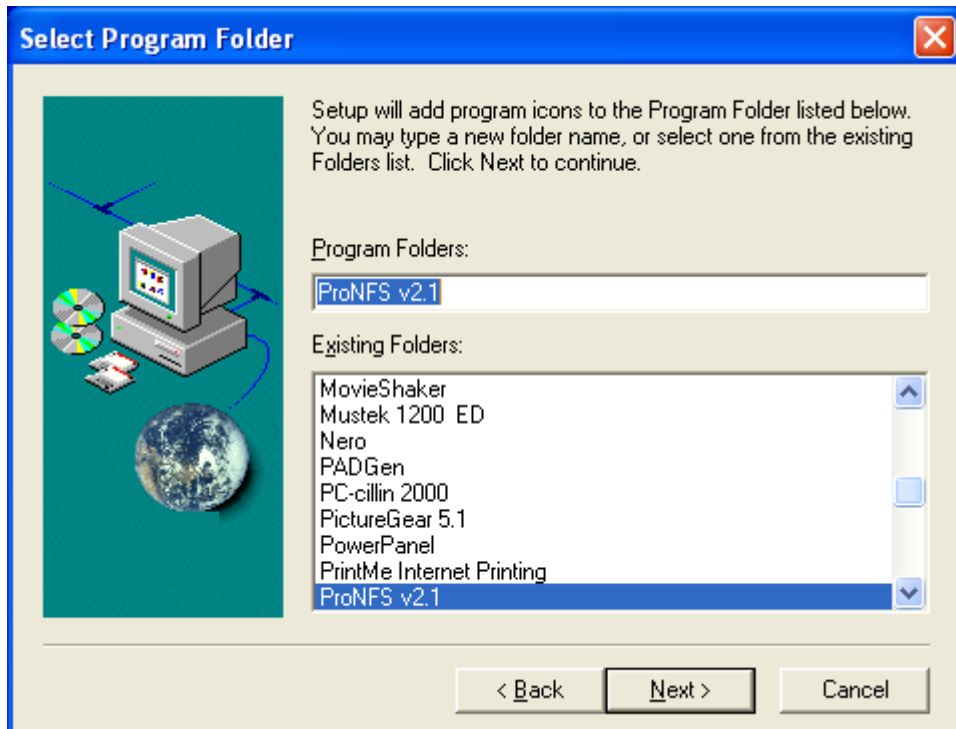
Next Step IMPORTANT for NFS Client!



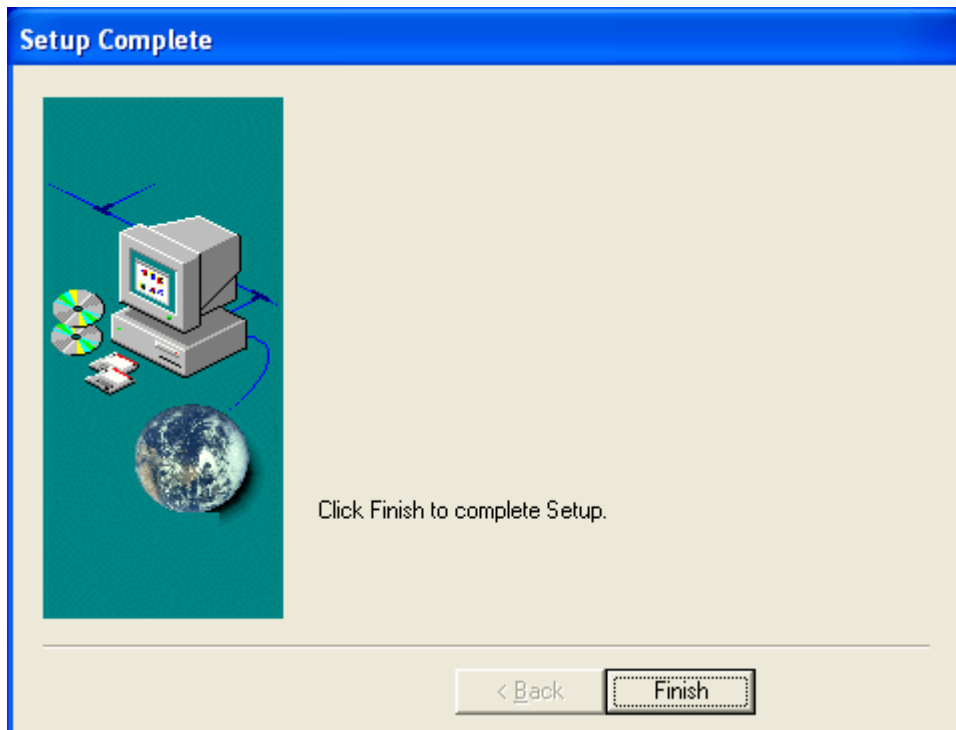
Ensure **NFSCI2K Client for NFS Network** is selected
Click **Next**



Click **Next**



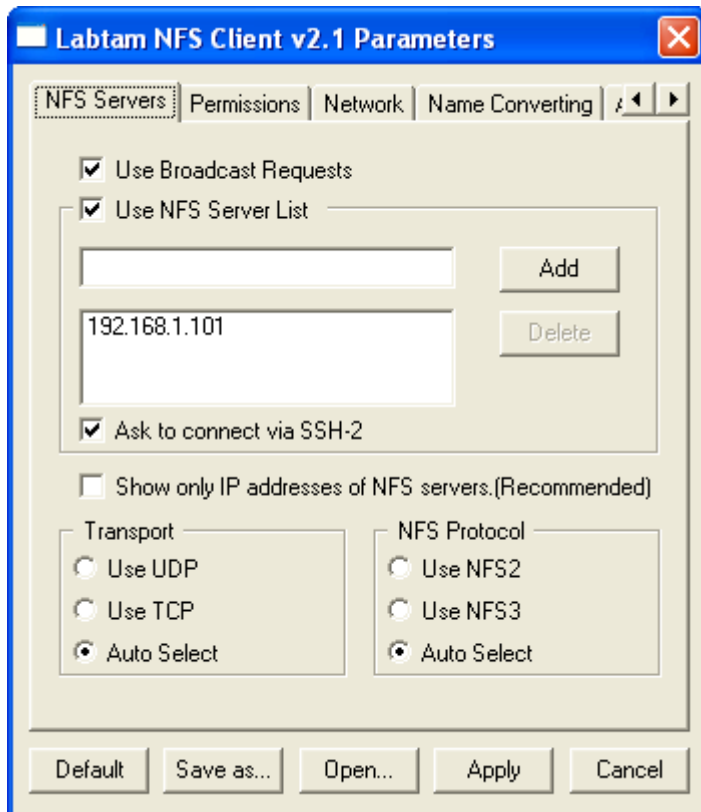
Click **Next**



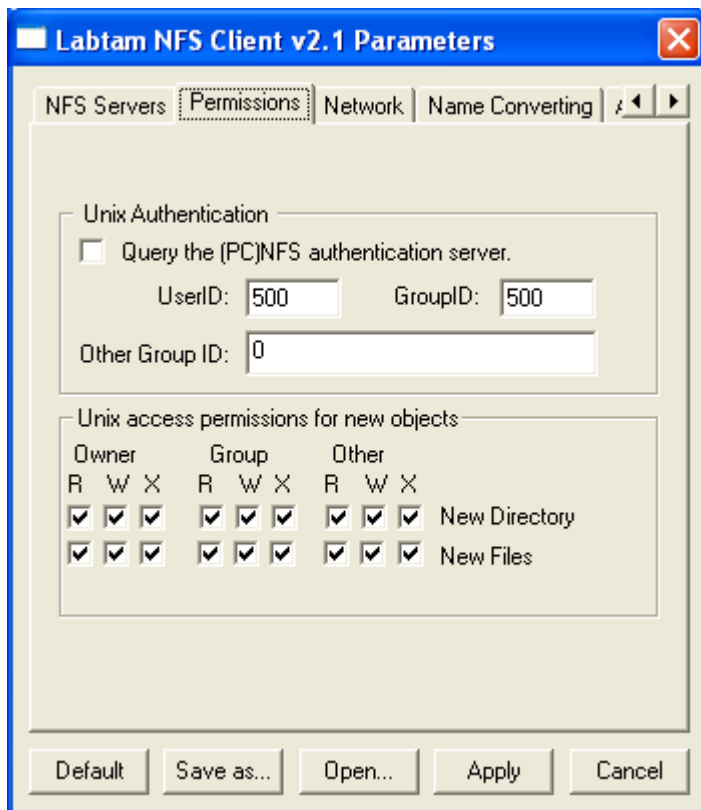
Click **Finish**

2.0 Settings for NFS Client – using SSH

Start > All Programs > ProNFS v2.x NFS Client > **NFS Client Settings**
Enter NFS Server details



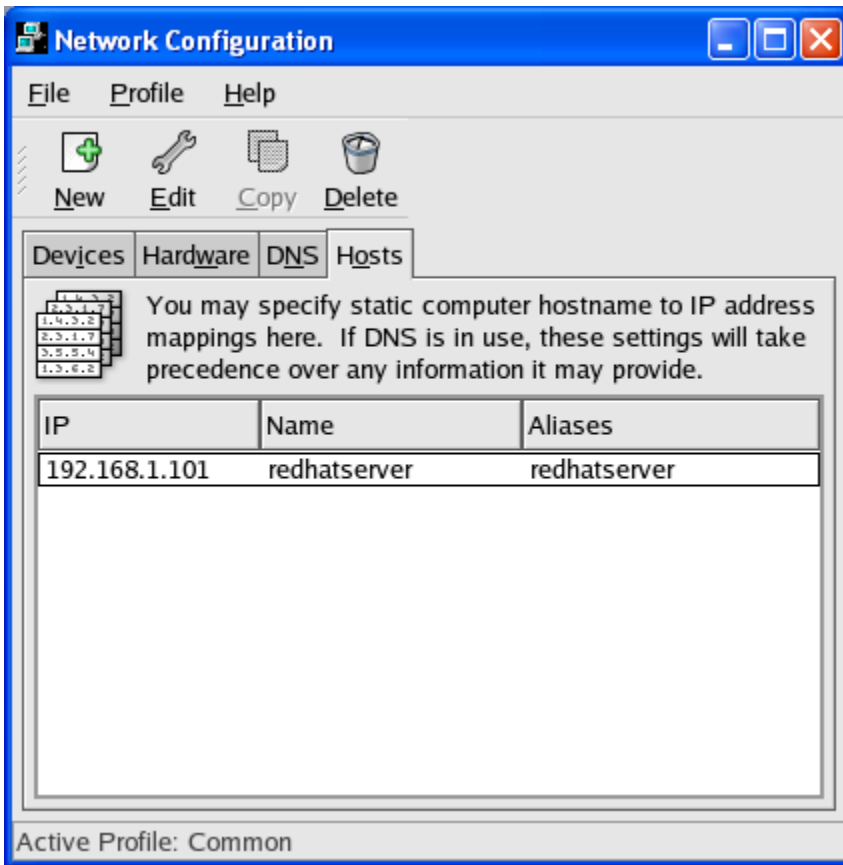
Click **Permissions** Tab



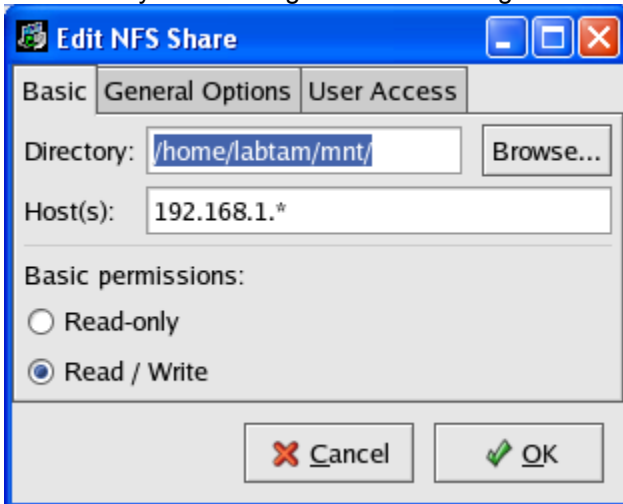
Click **Apply**

3.0 NFS Server Settings – (Redhat v9)

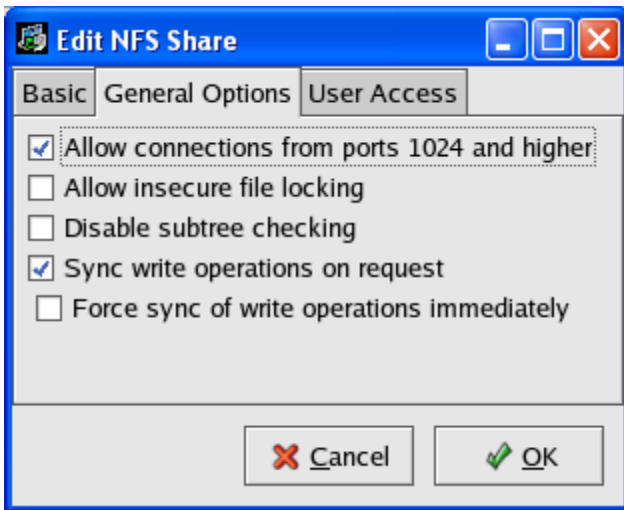
Redhat > System Settings > Network



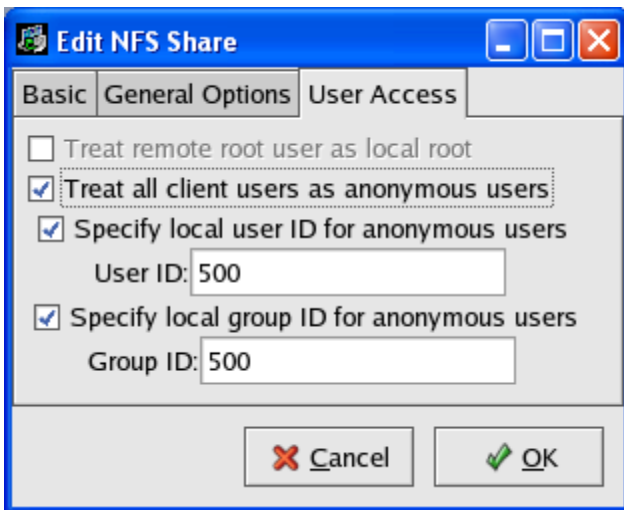
Redhat > System Settings > Server Settings > NFS Server



Click **General Options** Tab



Click **User Access** Tab



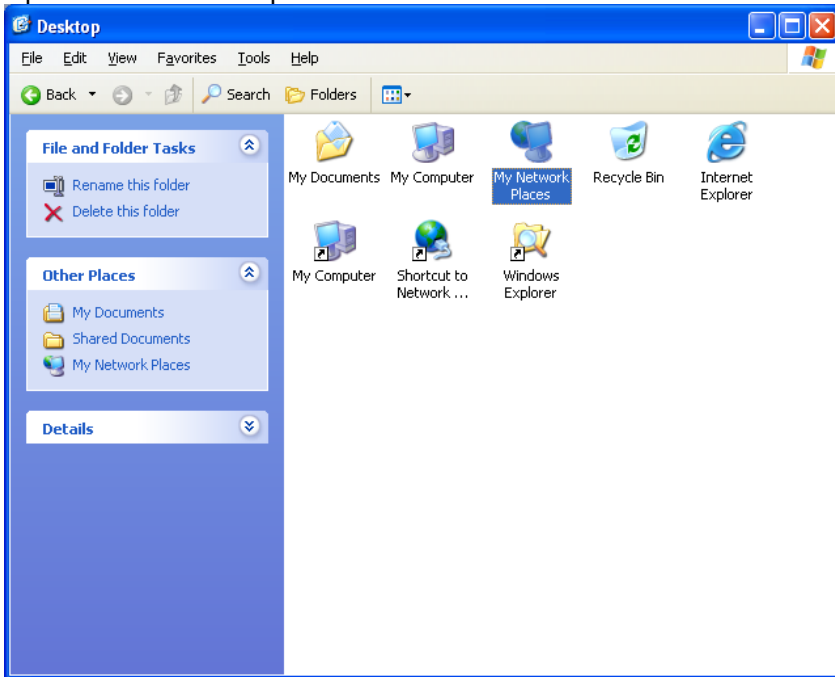
Click **OK**

Note: Ensure NFS Service is running

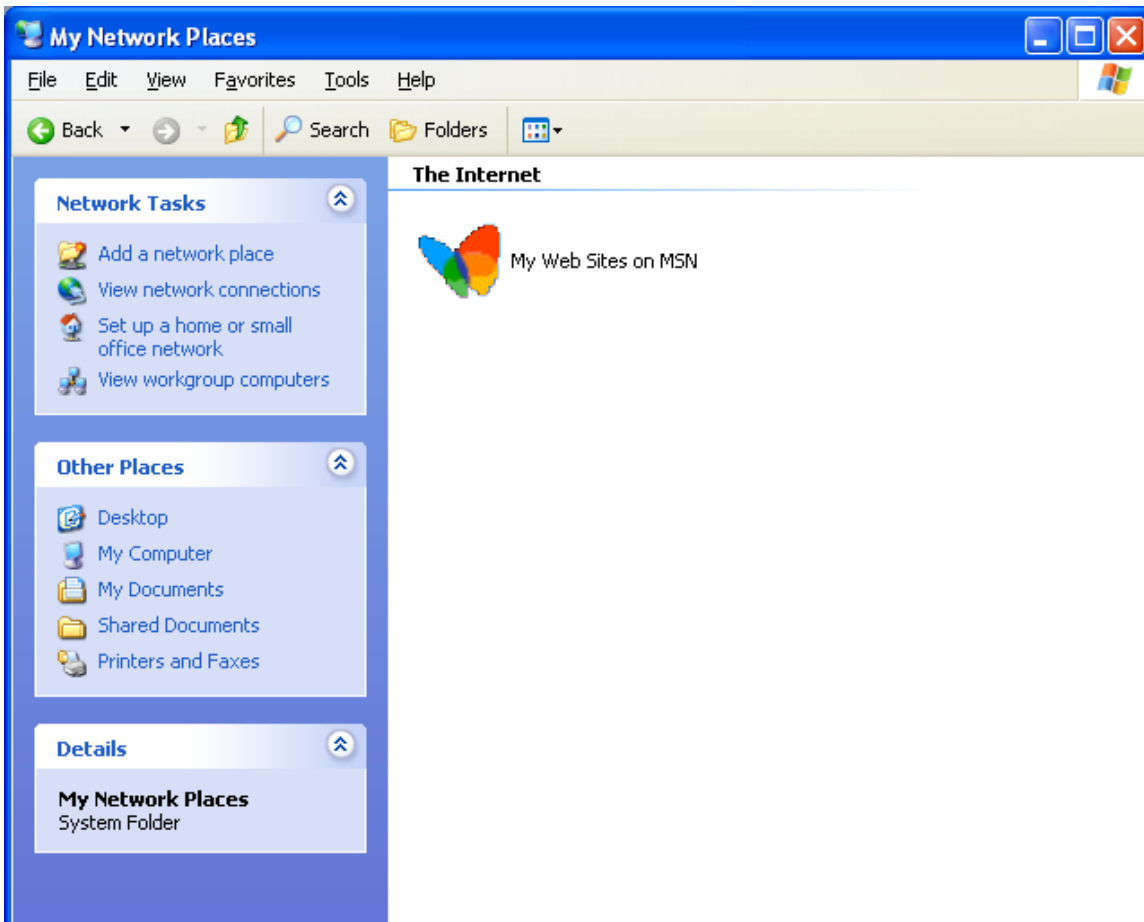
4.0 Mount NFS Client on Windows XP

Note: Create SSH connection to NFS server first using Telnet_SSH

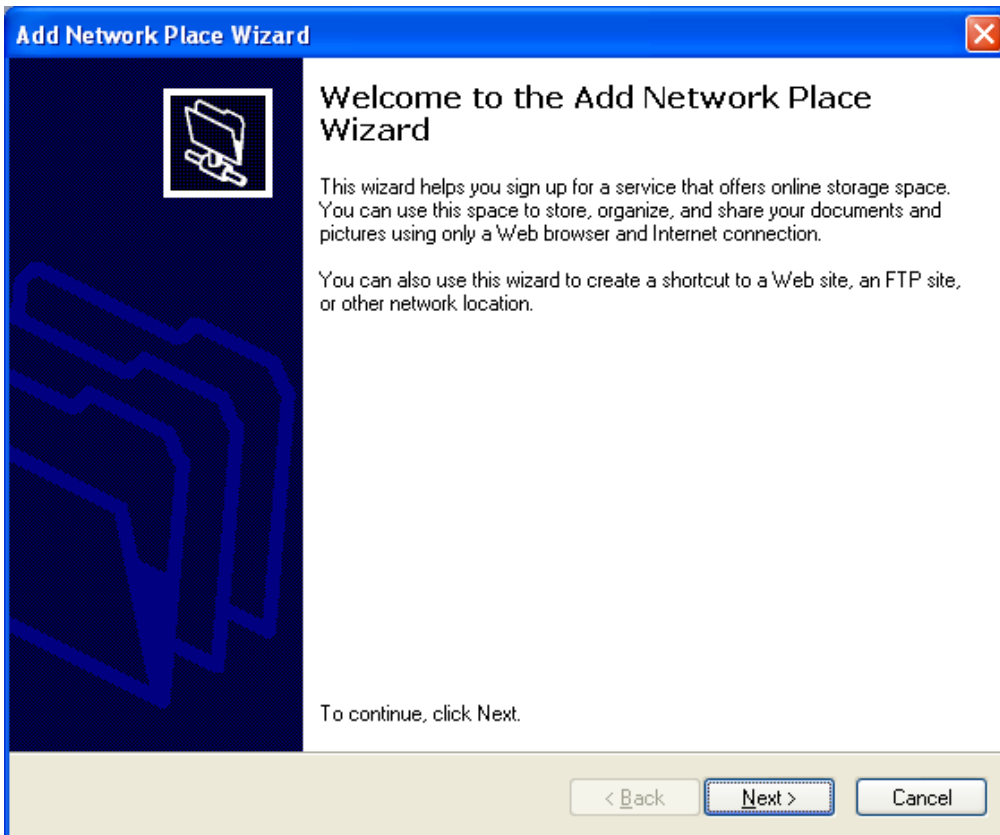
Open Windows desktop



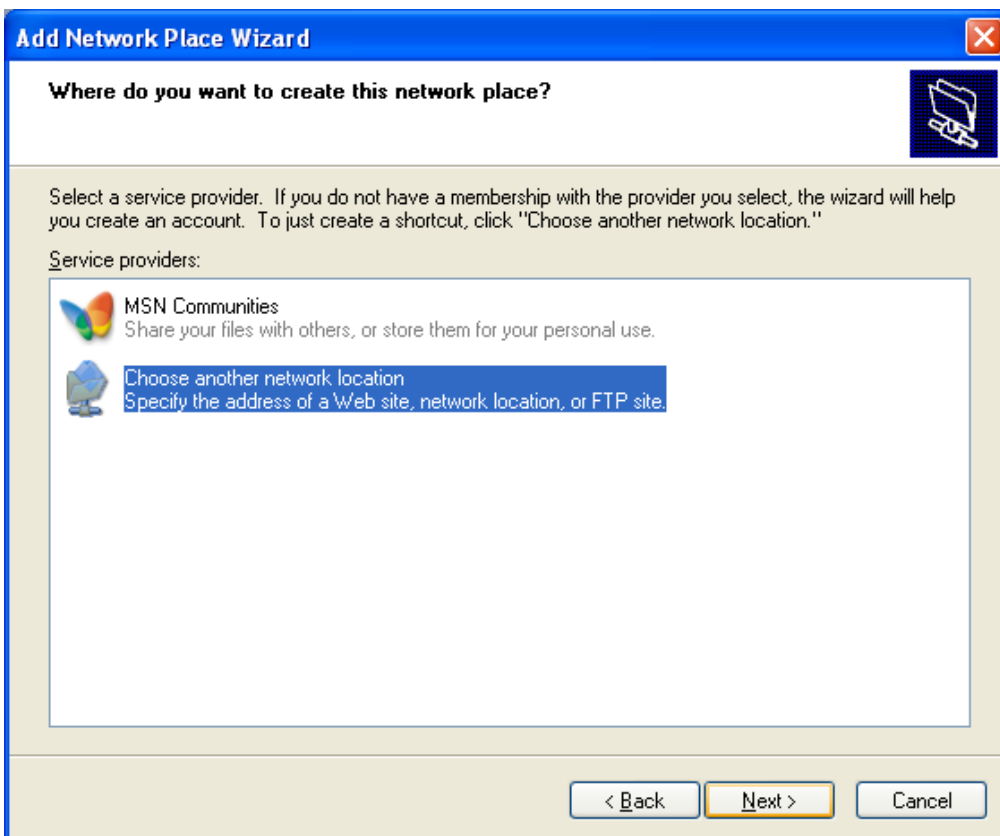
Click **My Network Places**



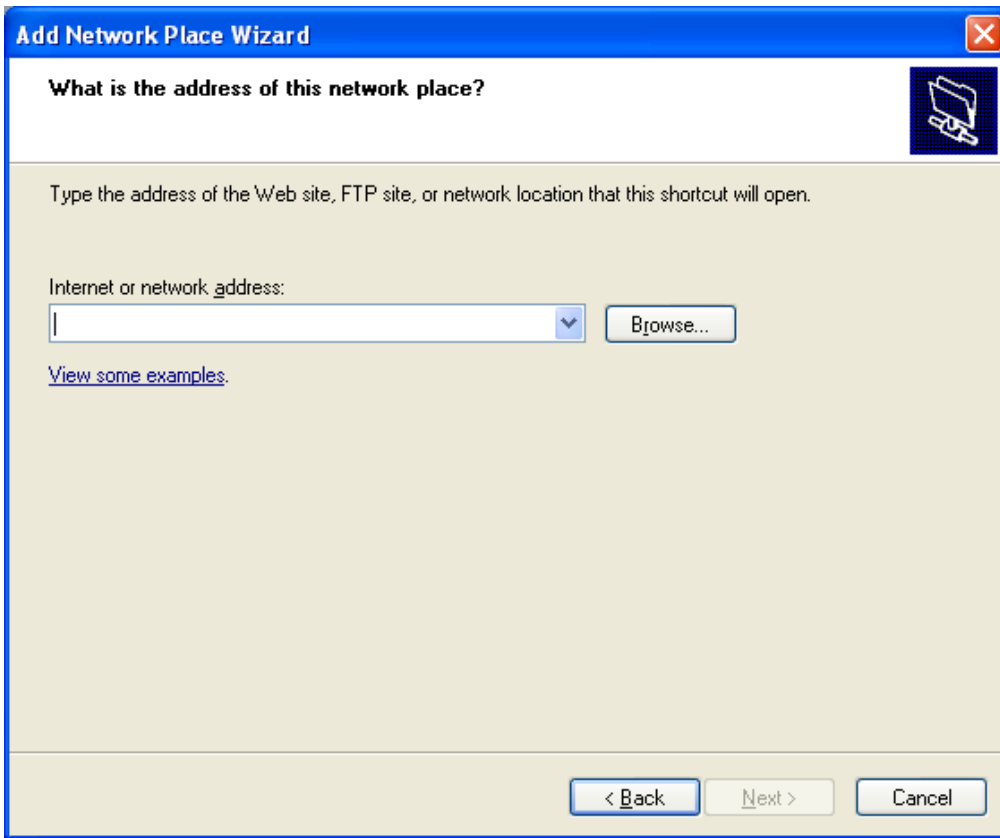
Click **Add a network place** – (Left side in Network Tasks)



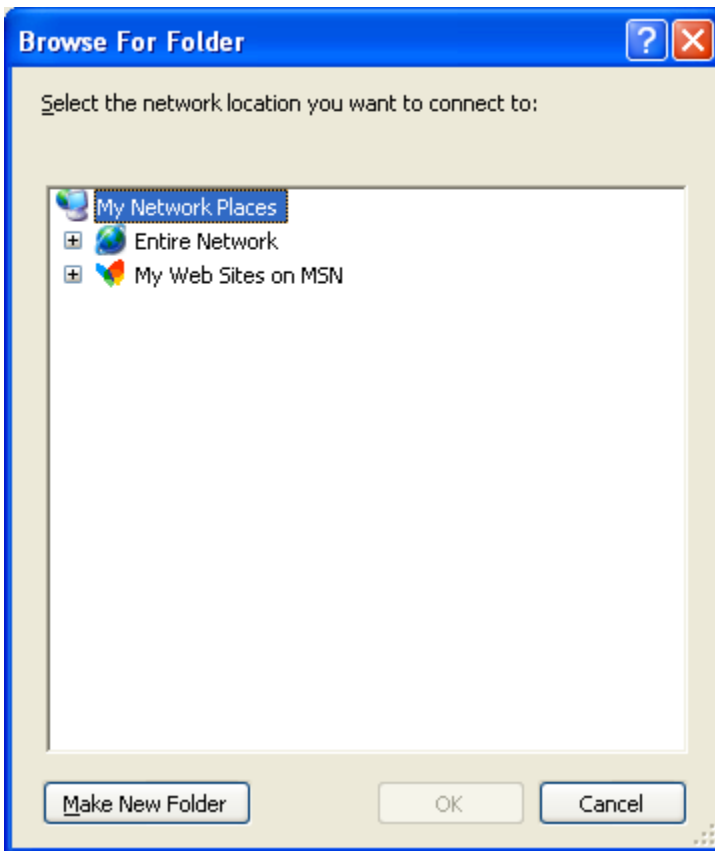
Click **Next**



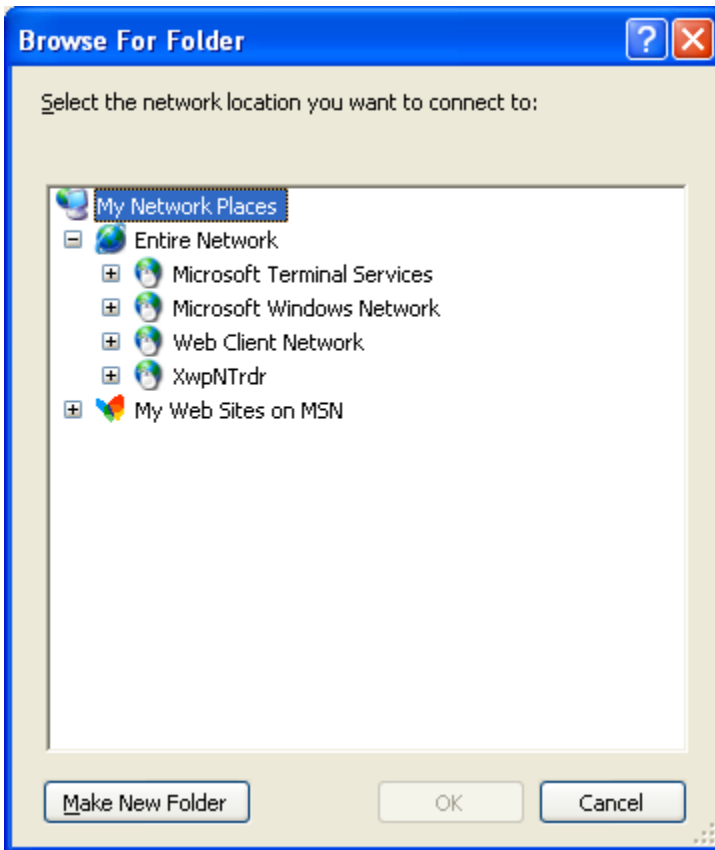
Click **Next**



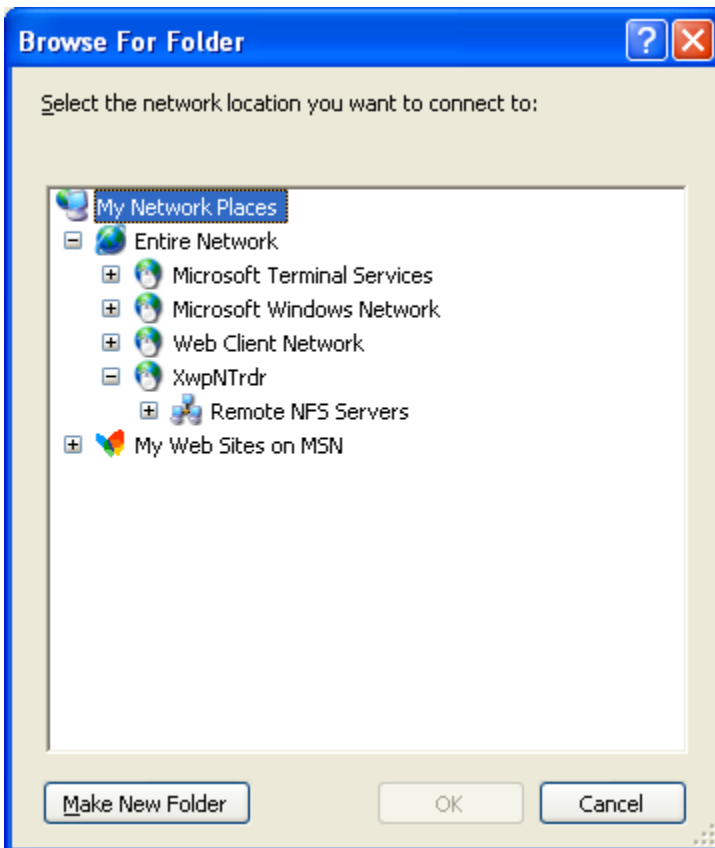
Click **Browse**



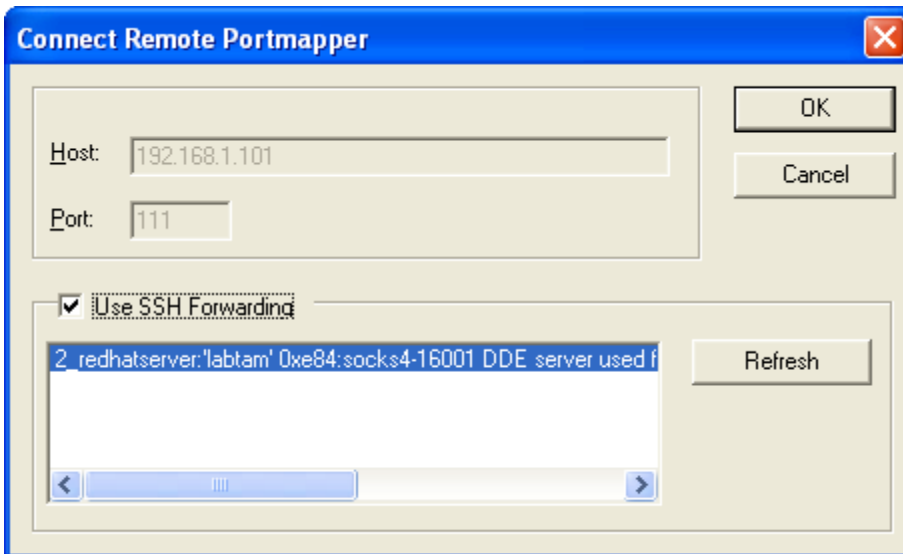
Click **+ Entire Network**



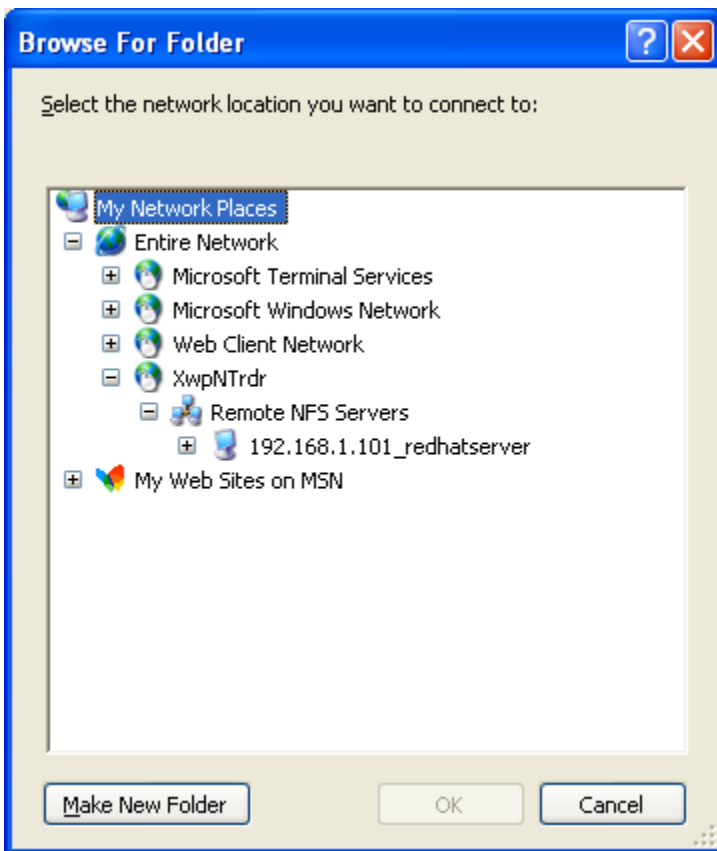
Click + XwpNTrdr



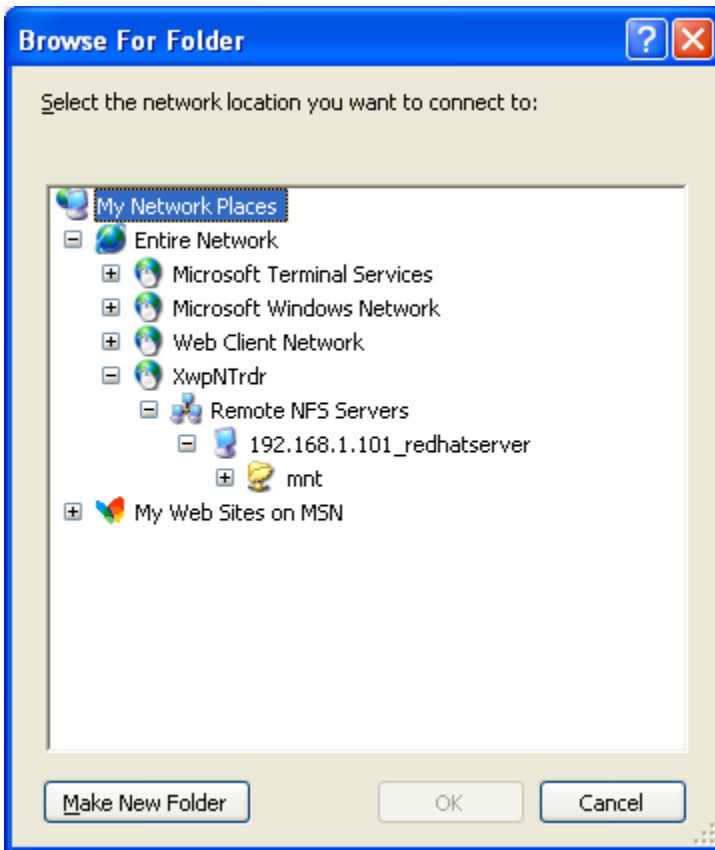
Click + Remote NFS Servers



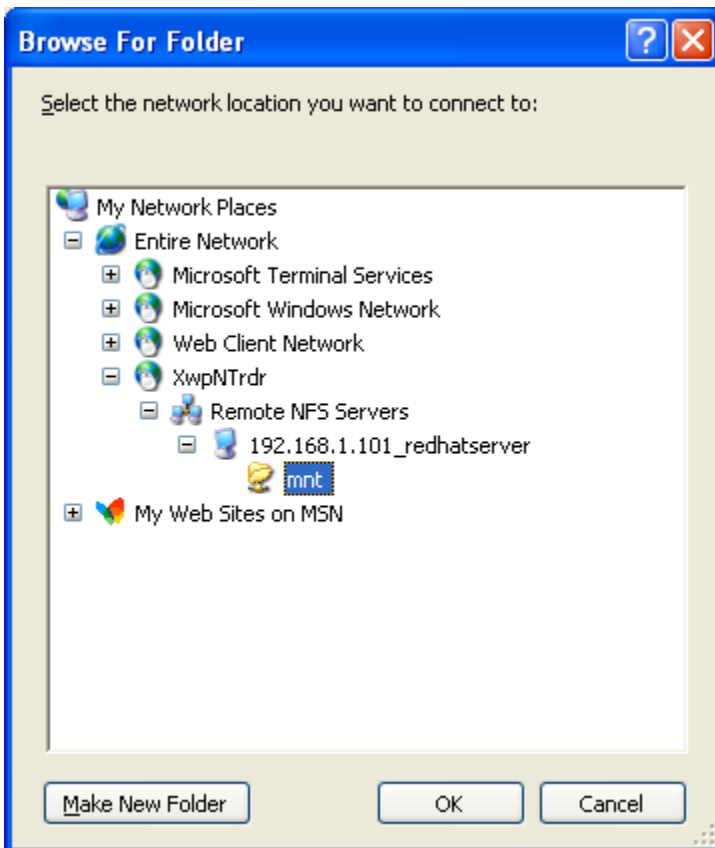
Select the Secure Connection line and select **Use SSH Forwarding**
Click **OK**



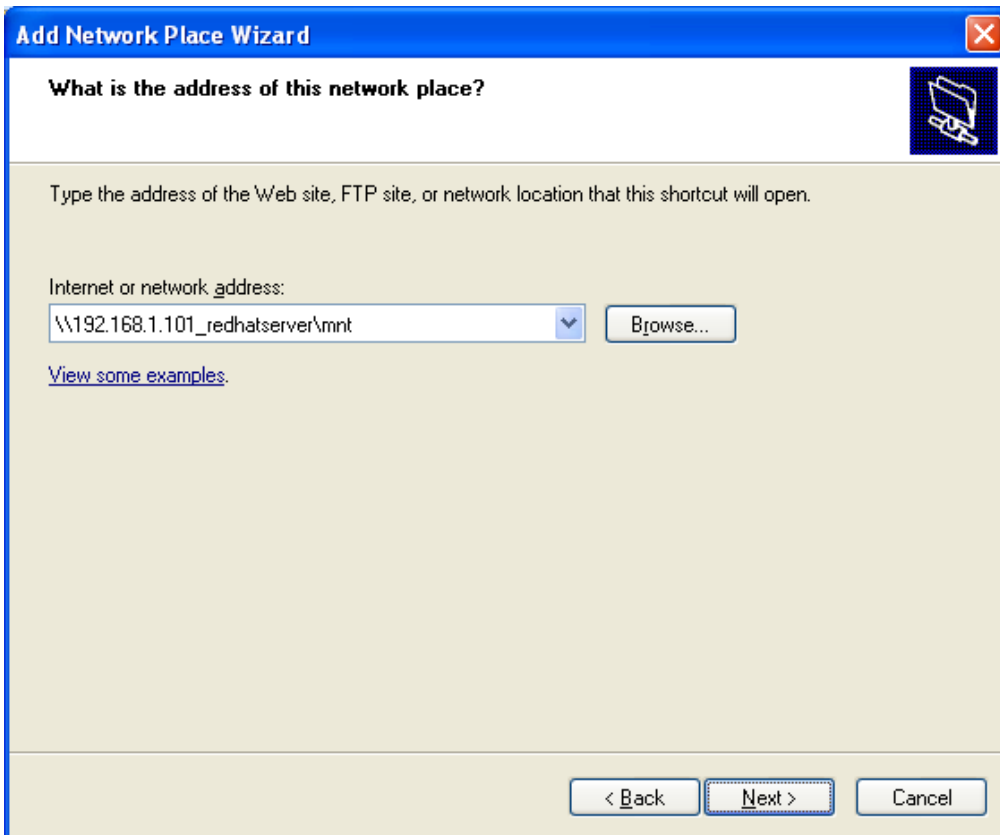
Select desired *Remote NFS Server*



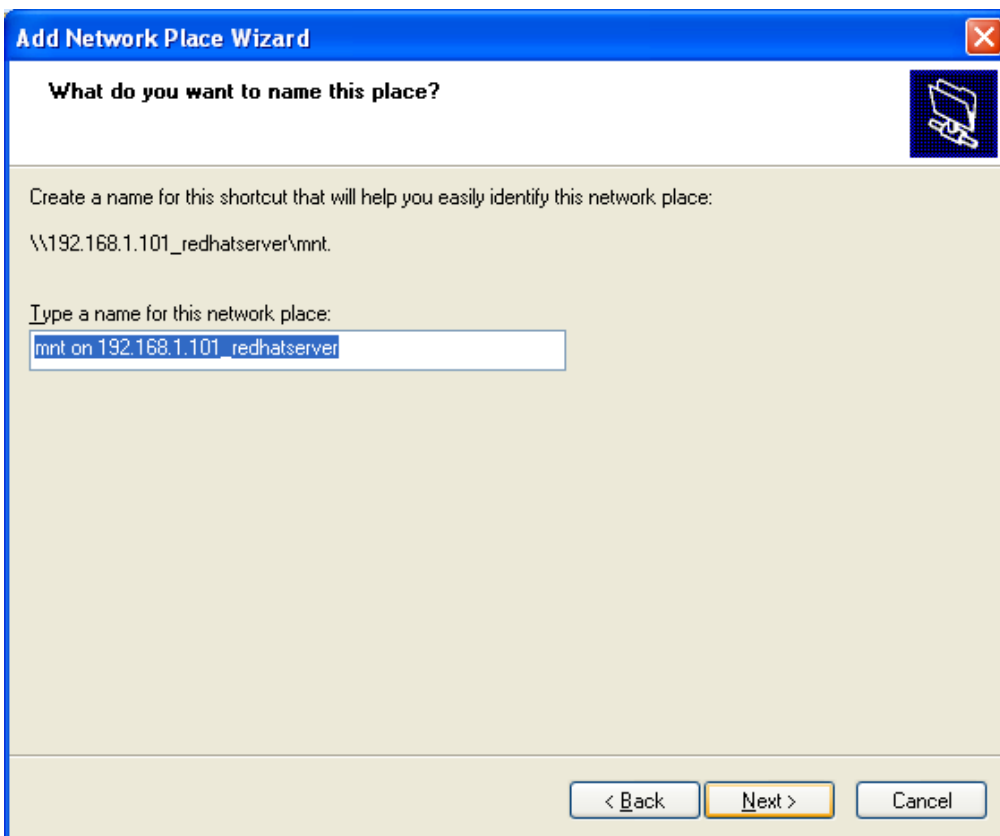
Select desired *Folder mount*



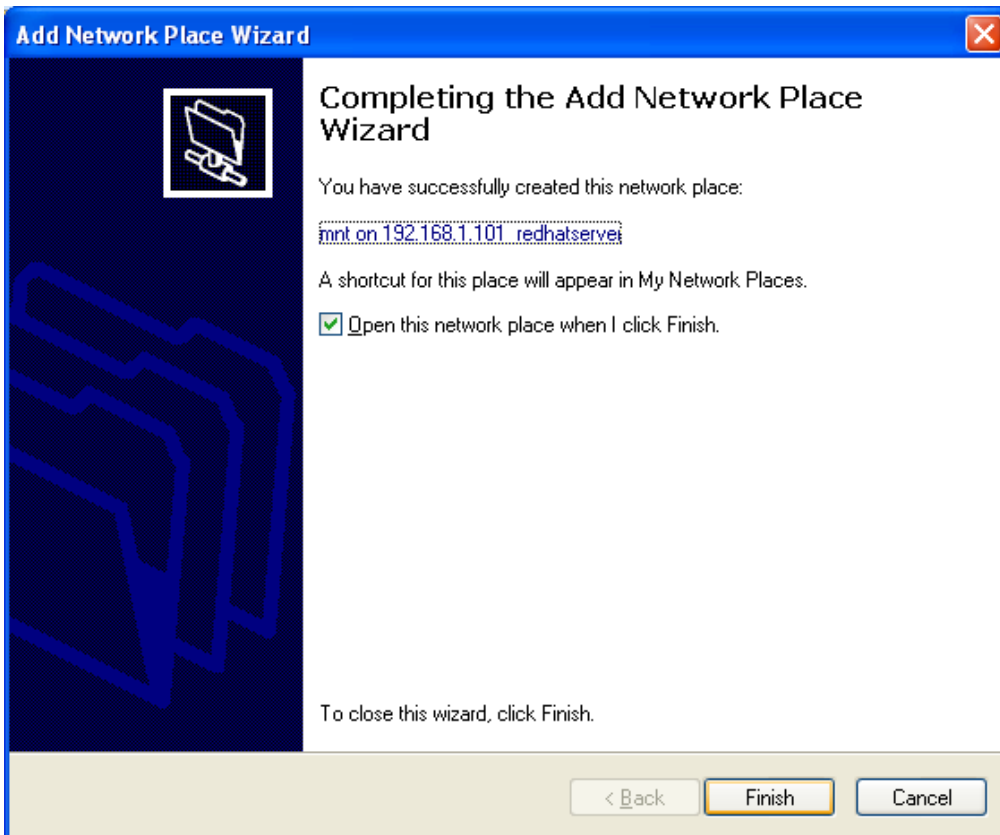
Click **OK**



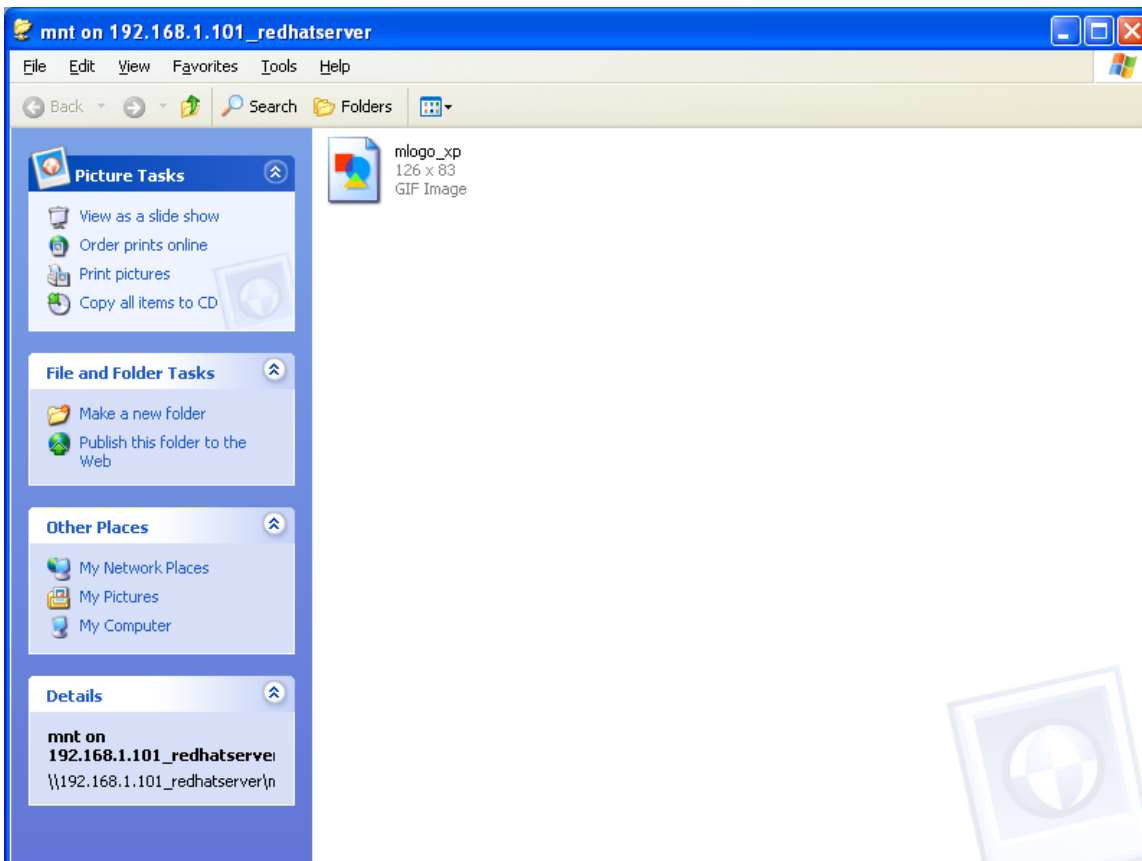
Click **Next**



Click **Next**

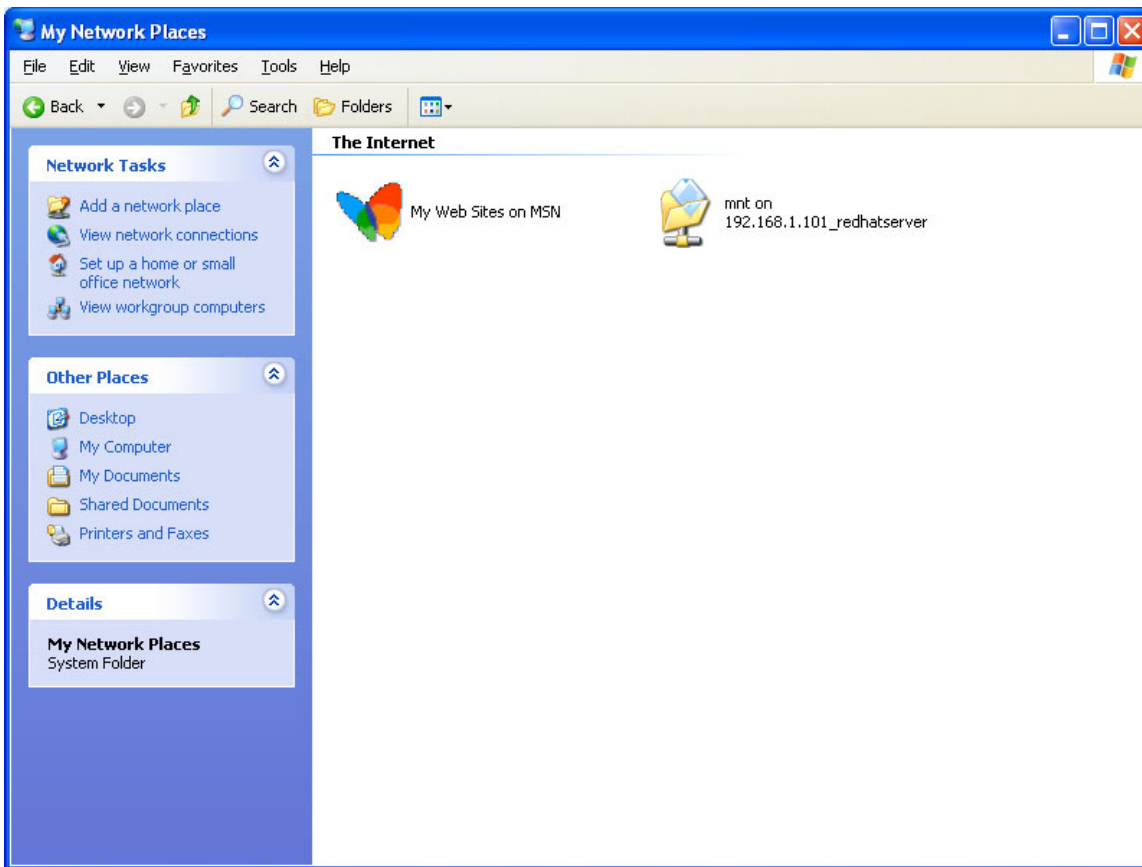


Click **Finish**

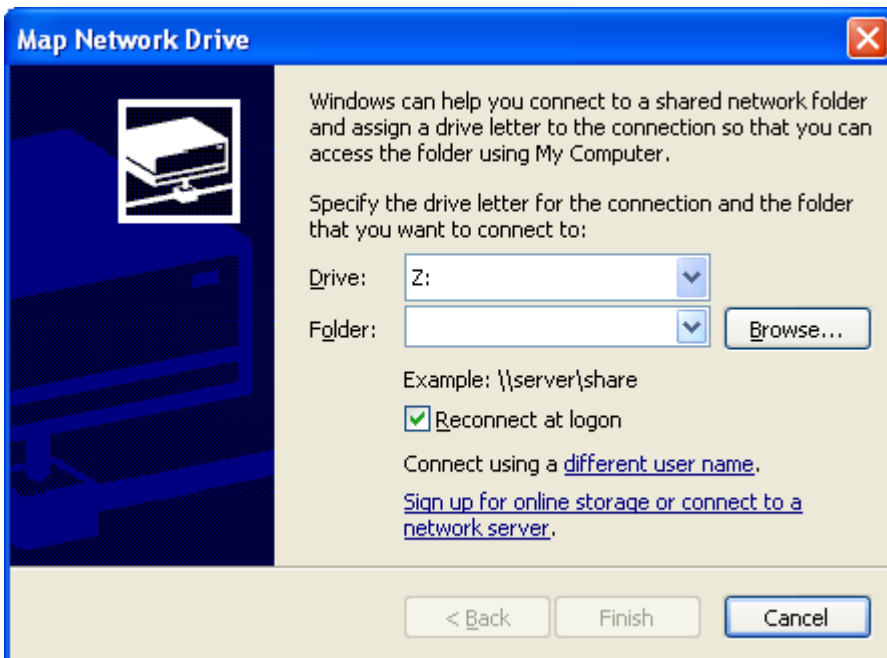


Remote Folder opens in window

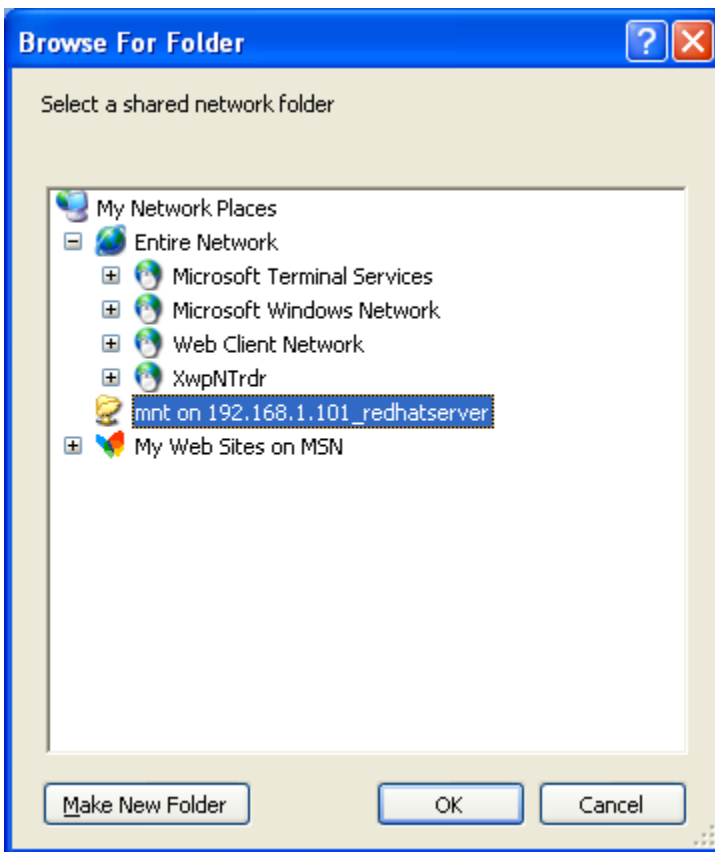
5.0 Map Remote NFS Folder to Windows Drive



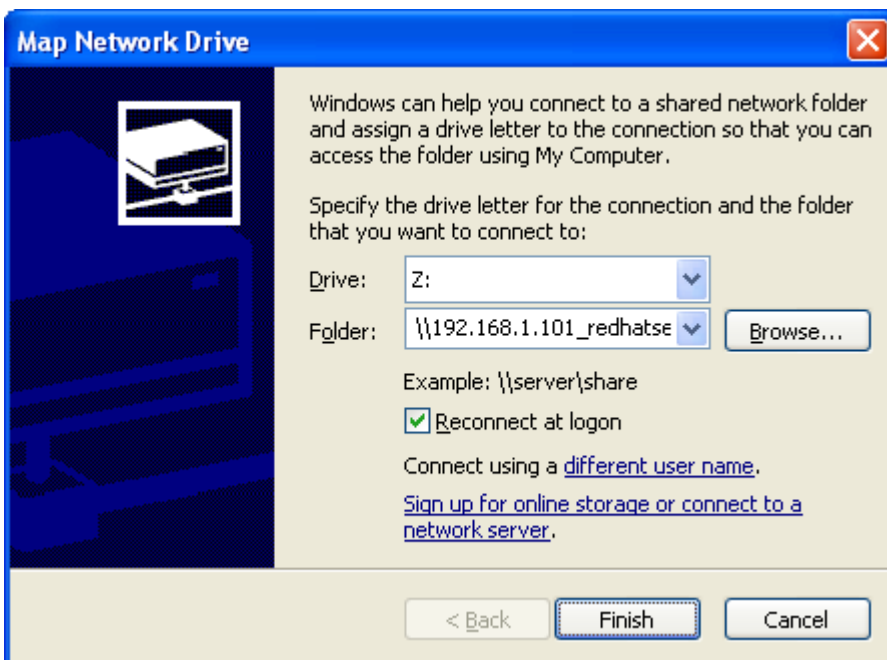
From the My Network Places Menu bar, select **Tools > Map Network Drive...**



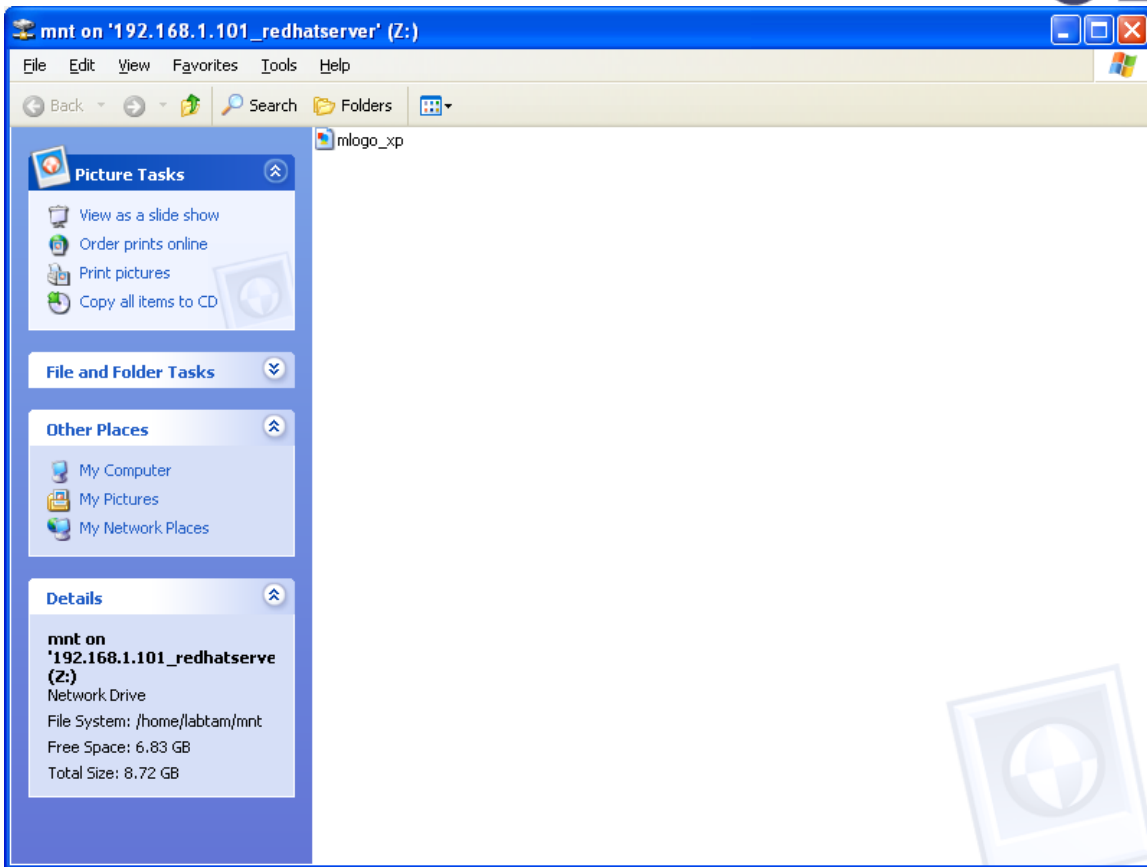
Click **Browse**



Select desired *Remote NFS folder* and click **OK**



Click **Finish**



Setup complete!!

Enjoy using Labtam's ProNFS Client software – Remember this product is also a NFS Server tool!

For further information please visit our Help Center at www.Labtam-inc.com or email help@Labtam-inc.com.